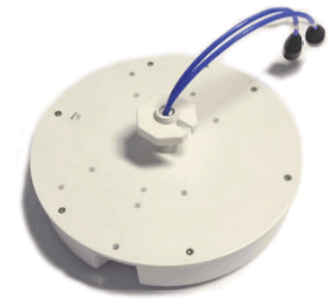


5005300A

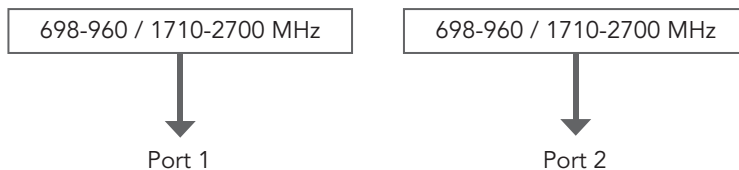
MIMO | Indoor Omni | Linear-Pol | 360° / 360° | 3.5-5.0 / 3.5-5.0 dBi

- Indoor, MIMO, omni antenna
- Designed for ceiling mount installation
- Available with N-type or 4.1/9.5 or 4.3/10 or 7/16-DIN connectors

Ordering Options	Model Number			
Antenna with N-Type Connector	5005300A			
Antenna with 4.1/9.5 Mini-DIN Connector	5005300A-mDIN			
Antenna with 4.3/10 Connector	5005300A-4310			
Antenna with 7/16-DIN Connector	5005300A-DIN			
Electrical Characteristics	Port 1: 698-960/1710-2700 MHz		Port 2: 698-960/1710-2700 MHz	
Frequency Band (MHz)	698-960	1710-2700	698-960	1710-2700
Polarization	Linear		Linear	
Horizontal Beamwidth	360°		360°	
Vertical Beamwidth	90°	30-65°	90°	30-65°
Gain (approx)	3.5 dBi	5.0 dBi	3.5 dBi	5.0 dBi
Impedance	50Ω			
Isolation	≥ 18.5 dB (average)	≥ 22 dB	≥ 18.5 dB (average)	≥ 22 dB
VSWR	< 2.0:1		< 2.0:1	
PIM, 3rd Order (2x20W)	≤ -150 dBc*			
Maximum Power	100W			
Connector(s)	2 / N-Type Female, 4.1/9.5 Mini-DIN Female, 4.3/10 Female or 7/16-DIN Female on 1m Plenum rated cable			
Operating Temperature	-55° to +60° C (-67° to +140° F)			
* Passive Intermodulation value for N-type connector model only applicable at date of manufacture.				
Mechanical Characteristics	LSZH ABS, White, RAL7035			
Radome Material/Color	40 x Ø218 mm		1.6 x Ø8.6 in	
Dimensions (Height x Diameter)	0.5 kg		1.5 lbs	
Weight	Ceiling mount - single point			
Mounting Options	Ceiling mount - single point			
Mounting	Ceiling mount - single point			



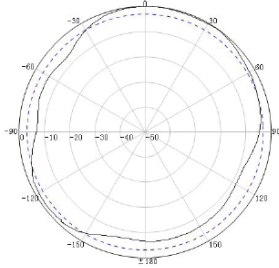
This model is available in the iBwave In-Building Network Components Database - www.ibwavecomponents.com



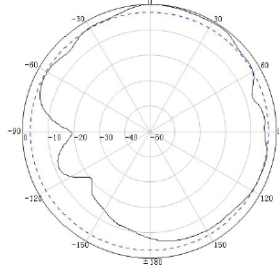
Quoted performance parameters are provided to offer typical, peak or range values only and may vary as a result of normal testing, manufacturing and operational conditions. Extreme operational conditions and/or stress on structural supports is beyond our control. Such conditions may result in damage to this product. Improvements to products may be made without notice.

5005300A

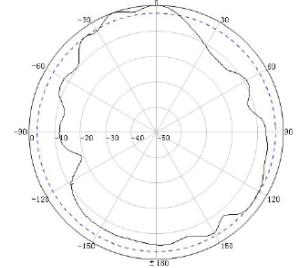
MIMO | Indoor Omni | Linear-Pol | 360° / 360° | 3.5 / 5.0 dBi



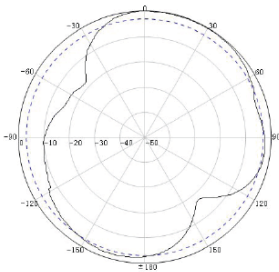
Horizontal | 900 MHz



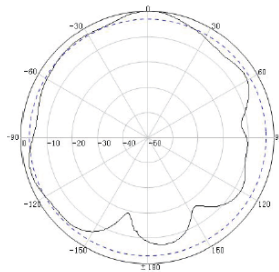
Horizontal | 1710 MHz



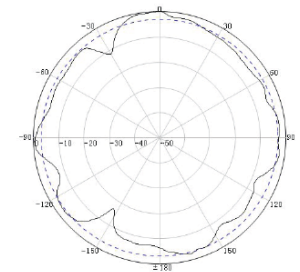
Horizontal | 2500 MHz



Vertical | 900 MHz



Vertical | 1710 MHz



Vertical | 2500 MHz

Quoted performance parameters are provided to offer typical, peak or range values only and may vary as a result of normal testing, manufacturing and operational conditions. Extreme operational conditions and/or stress on structural supports is beyond our control. Such conditions may result in damage to this product. Improvements to products may be made without notice.